

PARTNER TO THE INDUSTRY

Ver. 4.0





CONTENTS

Introduction

ORSY	1
Chemicals	2 – 5
Fasteners	6 – 7
Material Processing	8 – 13
Hand Tools	14 – 21
Pneumatic Tools	22 – 24
Equipments	25 – 27
Safety Products	28 – 32
Polishing of Painted Surface	33
REFILLO	34

Disclaimer

We strive to ensure the accuracy of the product description in this catalogue at the time of printing. However, the products may be subjected to change to meet market demands. Product images may slightly vary with the actual product.

For more information on our range of products, please visit www.wuerth.in



WÜRTH INSIGHT



WÜRTH Headquarters – Künzelsau, Germany

- More than 1,00,000 product line
- Total employees: > 70,000
- Over 3 million customers worldwide
- 2018 sales: EUR 13.6 billion
- Standard & Poor's rating: A Stable
- Over 400 companies in more than 80 countries



We make connections worldwide

WUERTH INDIA

Central Support Centre – Mumbai

Regional Support Centre – Chennai | Delhi | Kolkata

Over 960 employees working in almost every city to serve the customers



Our product range includes products for Automotive Technology/Service Maintenance, Chemicals, Paints, Engine Oils, Adhesives/Abrasives, Cutting Devices, Fasteners, Furniture and Construction Fittings, Dowel Technology, Industrial Safety and much more.

Business Areas



AUTO

- Auto Repair Shops
- Car Dealers
- Body Shops
- Motorcycle Repair Shops
- Smash Repair Shops
- Auto Electricians



CARGO

- OEM Dealers
- Authorized Workshops
- Multi-brand Workshops
- Forwarding Companies
- Transport Operators
- Body Building Units



METAL

- Metalworking Industry
- Fabrication Industry
- Maintenance, Repair & Operations
- Furniture Manufacturers
- Electrical Installations
- Turnery/Milling Shop



CONSTRUCTION

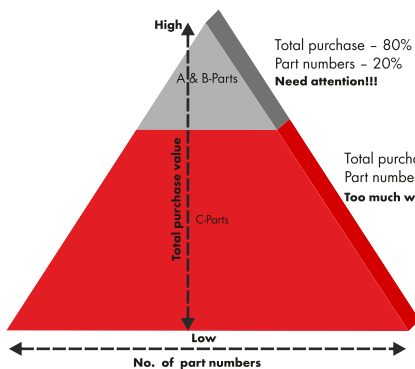
- Construction Companies
- Roofers
- Door & Window Frame Installation
- Furniture Manufacturers
- Interior Decorators & Painters
- Facade Builders



PAINTS

- Body Shops
- OEM Dealers
- Multi Brand Workshops
- Body Building Units
- Industries

ORSY



The parts classification pyramid reflects the necessity for an effective system to manage the “little things”.

C-Parts incurs high process and procurement costs, due to the unmanageable product range variety in huge quantities. ORSY (ORdering SYstem) is Wuerth’s creative solution to support C-Part and maintenance product management system. It suits all types of products for OEM/MRO and enables easy identification of products due to the

modular system. It is an efficient and perfectly organized system which enables quick access to items that are frequently required, and helps to keep track of stock flow and usage. The time thus saved is a premium, which in tandem enables cost saving as well, in acquisition of new goods. The ORSY process cycle involves an audit of the customer site and implementation of the system by dedicated support personnel.

Advantages of C-Part Management

- Reduction of inventory
- High availability
- Consistent high quality
- Product standardization
- Engineering services
- No stock taking or in-house transportation
- Better utilization of manufacturing space
- Limited obsolescence
- Reduction of suppliers
- **Total cost reduction**

ORSY – Full Service Evolution



Planning



Assembly, labelling & repacking



Servicing, maintenance & repair



Disposition & updating

CHEMICALS



HHS 2000

Art. No. 0893106

- Partly synthetic oil that is extremely resistant to high pressures.
- Creeping properties.
- Highly adhesive.
- Good material compatibility.



HHS DRY LUBE

Art. No. 08931066

- Shear-proof dry synthetic wax with PTFE.
- Dry synthetic wax.
- Outstanding creeping property and good penetration of gaps.



HHS 5000

Art. No. 08931063

- Extremely temperature-resistant, fully synthetic creep oil with PTFE.
- Temperature range: -20°C to +200°C.
- Temporary: +250°C.
- Colour: Transparent.



HHS LUBE

Art. No. 08931065

- EP long-life spray grease with a high protective factor against weathering and ambient influences.
- Low adhesion of dust and dirt.



RUST OFF

Art. No. 0890200011

- High quality rust releaser.
- High capillary activity.
- Optimum corrosion protection.
- Excellent water displacement.
- 300 g & 100 ml.



RUST-STOP QUATTRO

Art. No. 08932141

- Fast-drying universal primer with a broad range of applications.
- Corrosion protection.
- Welding primer.
- Very high temperature resistance up to 300°C, briefly up to 500°C.



RUST OFF ICE

Art. No. 08932240

- High-quality rust remover with cracking effect due to extreme cooling.
- Compatible with rubber and seals.
- Excellent creeping effect.



POWER 5

Art. No. 0893055451

- 5 in 1: Versatile multi-function spray.
- Rust penetrating agent, Lubricant, Cleaner, Corrosion protection & Contact spray.



WELDING SPRAY PERFECT

Art. No. 0893102100

Biological welding protection spray for aluminium, construction steel, non-ferrous metals, stainless steels and welding torch nozzles.



INDUSTRY CLEANER

Art. No. 0893140

For removing adhesive tape residue, labels and film stickers as well as stubborn dirt.



DEGREASER & METAL PART CLEANER

Art. No. 0890117

- General-purpose product for cleaning and degreasing metal parts surface.
- Fast, effective removal of soot, grease, industry dust and oily residues.



WIRE ROPE SPRAY

Art. No. 08931058

- Protective wax with OMC2 for lubricating and preserving.
- Does not drip with heat development.
- Optimum creeping capacity.
- Outstanding resistance to water.



ASSEMBLY & PARTS CLEANER 1A

Art. No. 0890106500

- Highly active and safe assembly and parts cleaner.
- Increases safety without loss of performance.
- High cleaning performance.
- Silicone-free.

CHEMICALS

FOOD SAFE LUBRICATING OIL

Art. No. 08931071

- Colourless special lubricant with creeping properties for the food beverage, pharmaceuticals and clinical industries.
- Tasteless and odourless.
- Good material compatibility.
- Silicone and AOX free.



CORROSION PROTECTION SPRAY

Art. No. 089315

- Low-viscosity special oil with excellent creep properties.
- Self-closing protective film that does not become touch-dry.
- Excellent salt water resistance in accordance with DIN 50021.



STAINLESS STEEL POWER CLEANER

Art. No. 08931212

- Special cleaning fluid for precleaning metal surfaces.
- Powerful removal of oil and grease.
- Safe to use in areas where food is processed or stored, such as commercial kitchens, canteens, abattoirs, food transport etc.



STAINLESS STEEL SPRAY PERFECT

Art. No. 0893114116

- Outstanding long-term protection and optimum metal surface appearance.
- Stainless steel coloured.
- High degree of resistance to running.



STAINLESS STEEL CARE OIL

Art. No. 08931210

- Removes light soiling, dust, cleaning marks and greasy finger prints.
- Produces an even, glossy surface.
- Water-repellent protective film prevents surface from becoming resoiled.



ALUMINIUM PASTE AL 1100

Art. No. 08931100

- High-performance anti-seize aluminium/copper-based lubricant.
- Resistant to temperatures and high pressure.
- Prevents burning on and seizing, cold welding, wear, corrosion, frictional corrosion.



PERFECT ALUMINIUM SPRAY, MATT

Art. No. 0893114115

- Outstanding long-term protection and optimum metal surface appearance.
- Aluminium coloured.
- High degree of resistance to running.
- High abrasion resistance and spot weldable.



BATTERY TERMINAL PROTECTOR

Art. No. 0890104

- Film protects battery terminals, pole terminals and plug connections from corrosion, weather and battery acids.
- Prevents transfer resistances and voltage drops.
- Longer battery life.



STAINLESS STEEL CARE SPRAY

Art. No. 0893121

- Cleaning care emulsion for metallic surfaces.
- Nurturing, creamy emulsion with cleaning effect.
- Dirt, cleaning and wiping marks and greasy, oily finger prints are thoroughly removed.
- Can be used on vertical surfaces.
- Medic white oil with synthetic oils.
- pH value: 10.2
- Silicone-free.



CU 800 SPRAY

Art. No. 0893800

- Highly adhesive lubricant, separating and anti-corrosive copper paste.
- Extremely resistant to high temperatures and high pressures.



ANTI SPATTER SPRAY

Art. No. 089310255

Bio-safe welding protection spray for aluminium, structural steel, nonferrous metals, stainless steels, etc.



ZINC SPRAY PERFECT

Art. No. 0893114113

- Outstanding long-term protection and optimum metal surface appearance.
- Zinc colour, Matt effect.
- High degree of resistance to running.
- Protection against corrosion (500 hours).



ZINC SPRAY LIGHT

Art. No. 0893114114

- Outstanding long-term protection and optimum metal surface appearance.
- Zinc Bright colour, Gloss.
- High degree of resistance to running.
- Protection against corrosion 250 hours.



CHEMICALS



METAL RESTORER

Art. No. 08931211

- For removing the most stubborn of dirt on metal.
- Contains activated citric acid.
- Natural aluminium oxide is used as an abrasive substance.
- Productive additives with remoisturising properties and highly viscose.



LIME REMOVER

Art. No. 089378

- Cleaner that dissolves lime, limescale and rust for water-conducting systems with colour indicator.
- For cleaning acid-resistant heat exchangers, pipework, water heaters, boilers, cooling systems, pumps and valves etc.
- Removes lime, limescale and rust as well as algae and fungi growth.



CLEANER FOR BOILER

Art. No. 089375

- Boiler Cleaner.
- Chemical basis: Aliphatic hydrocarbon.
- Smell/fragrance: Mild.
- Colour: Blue.



BMF CLEANER

Art. No. 0893118825

Environmental friendly cleaning agent for workshops, machinery and vehicles.



MULTI-PURPOSE GREASE II

Art. No. 08938711

- Lithium-soap graphite grease.
- Resistant to high pressure due to EP additives.
- Excellent emergency running properties.
- Good sealing action and protection against corrosion.



SILICONE SPRAY GREASE

Art. No. 0893223

- Extremely lubricating and insulating silicone grease.
- Very high electric resistance (= 14.7 kV/mm).
- Excellent insulating effect.
- Excellent water displacement.



SEALANT REMOVER

Art. No. 08931000

- Removes sealing materials, adhesives, paints, etc. in just minutes.
- Stable.



V-BELT SPRAY

Art. No. 0893230

- For extending the service life of V-belts.
- Prevents slipping, transfers full drive output.
- Eliminates squeaking.



LIMESTOP

Art. No. 08930300

- For hot-water, high-pressure cleaners.
- Reliably prevents lime deposits in parts conducting warm and hot water.



HAND CLEANER PLUS

Art. No. 089390001

- Hand cleaner for medium to heavy soiling with natural exfoliating particles.
- Gentle on the skin.
- Bio-degradable.



SURFACE CLEANER EASY-TO-CLEAN

Art. No. 0893117105

- Neutral, universal cleaner with gloss effect.
- Contains alcohol.
- Fresh citrus aroma.
- pH value = 7 in concentrate.



GAS BOILER CLEANER

Art. No. 0893761

- Cleaner for thorough and quick removal of coatings in gas boilers, gas ovens and gas-fired condensing boilers.
- Mild odour, AOX-free, Silicone-free.
- Colour: Green.
- Suitable for all commonly used materials in boiler manufacture.



WGF GREASE

Art. No. 0893530

- High-performance lubricating grease.
- Lithium-soap grease with molybdenum sulphide (MoS₂).
- Temperature resistant from -30°C to +130°C, briefly up to +150°C.

CHEMICALS



EXHAUST ASSEMBLY PASTE

Art. No. 0890100045

Soft compound for quick, easy and completely gas-tight assembly of sleeve (pipe plug) and flange connectors in exhaust systems.



RADIATOR SEAL

Art. No. 5861501300

- Radiator sealant for all engines with cooling systems and without filter systems.
- Permanently seals hairline cracks and leaks.



HIGH-STRENGTH BEARING LOCK

Art. No. 0893603050

- For high-strength securing of bushings, sleeves, gearwheels, bolts, shaft and hub connections, bearings exposed to high stresses.
- Reliable hardening at low temperatures around 0°C.



HIGH-STRENGTH SCREW RETAINER

Art. No. 0893270025

- Tough removable screw retainer and sealing compound – single-handed dispensing system.
- Ideally suited for screw connections exposed to high stresses.
- Excellent media and heat resistance.



MEDIUM-STRENGTH SCREW RETAINER

Art. No. 0893243025

- Removable screw retainer and sealing compound – one-handed dispensing system.
- For medium-strength bonding.
- No need for accelerator or activator agents.
- Excellent media and heat resistance.



LIQUID METAL FE1

Art. No. 0893449

- Fast-acting repair system, ideal for installers and workshops in the metal processing sector.
- High-quality two-component reaction resin system.
- After hardening, can easily be processed.



BOND SEAL

Art. No. 08901001/2/3

- Permanently elastic silicone sealing compounds for engine and bodywork.
- Excellent adhesion.
- Colours: White, Gray & Black.



SILICONE SPECIAL 180 70 ml

Art. No.	Colour
0890320	Transparent
0890322	Blue



SILICONE SPECIAL 250 70 ml

Art. No.	Colour
0890321	Red
0890323	Black



ENGINE AND HOUSING SEALING COMPOUND DP 300 NSF

Art. No. 0890100048



LUBRICANTS

Art. No. 0897...

- Engine Oil.
- Gearbox Oil.
- HLP 32, 46, 68.



CUTTING AND DRILLING OIL - 5L

Art. No. 0893050009

High-performance cutting oil for the heaviest machining work and for higher cutting speeds.

FASTENERS



SCREW, COUNTERSUNK HEAD

Art. No. 004808 2...

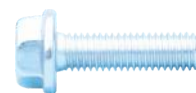
- Material: Steel.
- Screwing-property class: 4.8.
- Surface: Plain.
- Screw Head Type: CSK.
- Thread Type: M.



SCREW, HEXAGON HEAD W. SHAFT

Art. No. 005310 1...

- Material: Steel.
- Screwing-property class: 8.8.
- Surface: Galvanised.
- Screw Head Type: Hexagon Head.
- Screw Thread Design: Partial Thread.
- Thread Type: M.



SCREW, HEXAGON HEAD FLANGED

Art. No. 027392...

- Material: Steel.
- Screwing-property class: 8.8.
- Surface: Galvanised.
- Screw Head Type: Hex with flange.
- Thread Type: M.



SCREW, CHEESE HEAD

Art. No. 00823 1...

- Material: Steel.
- Screwing-property class: 8.8.
- Surface: Plain.
- Screw Head Type: FIL.
- Thread Type: M.



DRILLING SCREW, COUNTERSUNK HEAD

Art. No. 021239...

- Material: Steel.
- Surface: Galvanised.
- Screw head type: CSK.



ALLEN HEAD SCREW, CHEESE HEAD

Art. No. 00845 1...

- Material: Steel.
- Surface: Galvanised.
- Blue passivated.
- Screw head type: M.



EYE BOLT

Art. No. 02360105...

- Material: Steel.
- Surface: Galvanised.
- Screwing-property class: 4.6.
- Blue passivated.



WING SCREW

Art. No. 0237...

- Material: Steel.
- Surface: Galvanised.
- Head type: M.



CHEESE HEAD SCREW, HEXAGON HEAD

Art. No. 008404...

- Material: Steel.
- Screwing-property class: 8.8.
- Surface: Galvanised, Yellow.
- ISO 4762.



GRUB SCREW

Art. No. 0254...

- Material: Steel.
- Surface: Galvanised.
- Head type: M.



STUD-BOLT

Art. No. 0260005...

- Material: Steel.
- Surface: Galvanised.
- Blue passivated.
- DIN: 1434.



BLIND RIVETS

Art. No. 09383 6...

- Sleeve: Aluminium.
- Mandrel: Galvanised steel.
- Blue passivated (A2K).



STUD

Art. No. 0250861...

- Material: Steel.
- Screwing-property class: 8.8.
- Surface: Plain.
- DIN: 939.
- Thread type: M.



LEFT HAND THREADED ROD

Art. No. 09589...

- DIN 976-1 (form A).
- Surface: Plain.
- Material: Steel.

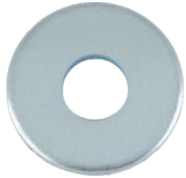


STRAIGHT PIN, HARDENED

Art. No. 02520...

- Material: Steel.
- Design: Hardened.
- Surface: Plain.
- DIN: 6325.

FASTENERS



PLAIN WASHER

Art. No. 041616...

- Material: Steel.
- Surface: Galvanised.
- Blue passivated.
- DIN 9021.



FLAT WASHER WITH CHAMFER

Art. No. 007906 16...

- Material: Steel.
- Surface: Hot-dipped.
- Thread type: M.
- EN 14399/6.



SERRATED WASHER EXTERNAL TOOTH

Art. No. 042320...

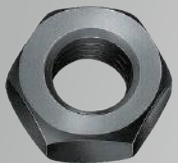
- Material: Steel.
- Surface: Galvanised.
- Blue passivated.



SPRING LOCK WASHER FORM B

Art. No. 0434...

- Material: Spring Steel.
- Surface: Galvanised.
- Thread type: M.
- DIN 137.



HEXAGON NUTS

Art. No. 00790516...

- For high-strength pre-loaded structural screw connections for metalworking.
- High-strength assemblies in accordance with DIN EN 14399-4.



CAP NUT, DOMED

Art. No. 0350...

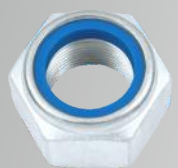
- Material: Brass.
- Surface: Plain.
- Thread type: M.



WING NUT, GERMAN FORM

Art. No. 0342...

- Material: Steel.
- Surface: Plain.
- Head type: M.



NYLOCK NUT

Art. No. 036810

Nuts with reduced loadability.

- Material: Steel.
- Screwing-property class: 8.
- Surface: Galvanised.
- Design: Polyamide clamping piece.



CAP NUT, LOW PROFILE

Art. No. 03490...

- Material: Stainless steel A4.
- Surface: Plain.
- Thread type: M.



LOCKING NUT

Art. No. 0316...

- Material: Steel.
- Surface: Yellow galvanised.
- Thread type: M.
- DIN 7967.



FIRE BRIGADE SNAP HOOK

Art. No. 052410010...

- Material: Steel.
- Surface: Galvanised.
- DIN 5299.



SHACKLE DIN

Art. No. 052310...

- Galvanised steel, blue passivated (A2K), drop-forged and deburred.
- Connection element.
- For crane loading gear.
- For towing vehicles.
- For extending cables and chains.
- For use in transporting heavy and bulky goods.



CLAMPING SLEEVE

Art. No. 0475..

- Material: Spring Steel.
- Surface: Plain.
- DIN 1481.
- ISO 8752.



SPIRAL PIN

Art. No. 04758...

- Material: Steel.
- Surface: Plain.
- ISO 8748.



SPLIT PIN

Art. No. 04704...

- Material: Steel.
- Surface: Galvanised.
- DIN 94.

MATERIAL PROCESSING



CUTTING WHEEL (4"/5"/7" & 14")

Art. No. 06699909...

Art. No. 0670935528 (14")

- Synthetic resin bonded, Fibre-reinforced high performance cutting wheel.
- Extremely low breakage susceptibility.
- Max. circumferential speed 80 m/s.
- EN 12413 standard.
- Applications: Cutting solid materials, thick-walled pipes, profiles, channels etc.



SMALL MINI FIBRE DISCS

Art. No. 0580007536...

- Zirconium corundum, with quick-change mounting.
- Rugged polyester cloth.
- High tear resistance.



GRINDING WHEEL (4"/5"/7")

Art. No. 06699951...

- Synthetic-resin bonded, fiber-reinforced high-performance grinding wheels.
- Especially long service life combined with high removal rates.
- Max. circumferential speed 80 m/s.
- Applications: Grinding edges, weld seams and surfaces.



SANDING DISC

Art. No. 0673205018...

- Material: Aluminium Oxide.
- Max rotation speed: 23000 rpm.
- Grain size: Medium 180.



CONICAL BRUSH, RUST FREE WIRE

Art. No. 0714692411

- For angle grinders.
- Machining stainless steel.



CONICAL BRUSH

Art. No. 0714691411

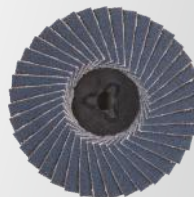
- For angle grinders.
- Special shape brushes, can be used to machine hard-to-reach places.
- Material: Steel
- Hardened steel wire, braided counter clockwise.



SANDING BELT, FOAM MATERIAL

Art. No. 067298960

- Material: Zirconium corundum.
- Grain size: 60



FLAP DISC

Art. No. 0578605036

- Zirconium corundum.
- Sturdy plastic plate with quick-change mounting.
- Rugged, flexible cotton fabric with high tear resistance.
- Versatile, broad range of applications.



ABRASIVE PAPER, DRY

Art. No. 5506 247...

Base material:

- P40 – 100, D-paper.
- P120 – 240, C-paper.
- P280 – 600, B-paper.

Bond: All-synthetic resin.

Coating:

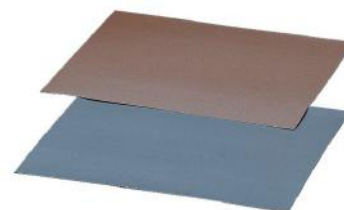
- P40 – 180, stearate coating.
- P220 – 600, special coating which prevents clogging.

Abrasive material:

- P40 – 80: ceramic grain.
- P100 – 600: aluminum oxide.

Scattering: Open scattering.

Forms: Disks, strips and rolls.



ABRASIVE PAPER, WET

Art. No. 0584111...

- Silicon carbide.
- Usable without soaking, very flexible sandpaper.
- Sharp-contoured working.
- Outstanding finish.

MATERIAL PROCESSING



SPIRAL DRILL BIT, HHS

Art. No. 06344

- Special core geometry at the drill tip and reduced chisel edge (has the effect of drill point thinning).
- Reinforced, sequential core increment.
- DIN 388 type RN assortment 19 pcs.



TWIST DRILL BIT SET

Art. No. 0624 000 001

- Assembly drill bits for precise working in steel, tip angle 130°.
- Precise drilling.
- Self-centring.
- Long tool life.
- The crosswise grinding ensures an excellent centring effect.
- HC (High Speed Cutting) grinding and the associated precise cutting geometry ensures long service life.
- DIN 388 type HSS 19 pcs.



SPIRAL DRILL BIT – HHS, METAL SET

Art. No. 062501

- Economical HSS twist drill for general use in steel, up to 800 N/mm².
- Clearly laid down, consistent quality - above market standards.
- For use in hand-held drills.



BIT SET

Art. No. 0614250300

- Contents: 105 pcs.
- 1/4" bit assortment with short and long versions of the most common standard and safety bits.



CHISEL SET – 4 PCS

Art. No. 071463 40

- Completely hardened shaft, Chrome vanadium air hardening steel.
- Regrindable blade.
- Oil-resistant PVC and Octagonal handle.
- Rebound impacts.
- Contents: Electricians' slitting chisel, bodywork chisel, stone chisel, joint chisel.



PIN PUNCH SET – 5 PCS

Art. No. 07463259

- Ergonomically shaped 2C handle.
- Vibration protection.
- Impact guard.
- Tempered tool steel.
- L X Ø (230 X 8, 240 X 10, 260 X 12, 280 X 14, 290 X 16) mm.

MATERIAL PROCESSING



WIRE THREAD INSERT ASSORTMENT W.TEC® INSERT COIL FREE RUNNING

Art. No. 46279903

- For producing a lasting, heavy-duty female thread.
- With free running, true to gauge thread.
- Stainless steel.
- Surface: Bare
- Thread type: Metric thread



HAND TAP SET

Art. No. 063901

- Hand Taps HSS DIN 352 for metric ISO threads according to DIN 13.
- 1 Set of Taper, Intermediate and Plug Taps each for M3/M4/M5/M6/M8/M10/M12.



TIME-SERT® THREAD REPAIR ASSORTMENT

Art. No. 5964096171

- Complete Set - M5/M6/M8/ M10/M12.
- Metric coarse thread.
- Bushes and tools for 5 sizes with 2 different lengths of bushes.

Contents: 70 pcs.
(Thread Ø x pitch x length, mm)

- M 5 x 0.8 x 7.6
- M 5 x 0.8 x 10.0
- M 6 x 1.0 x 9.4
- M 6 x 1.0 x 12.0
- M 8 x 1.25 x 16.2
- M 8 x 1.25 x 11.7
- M 10 x 1.5 x 14.0
- M 10 x 1.5 x 20.0
- M 12 x 1.75 x 16.2
- M 12 x 1.75 x 24.0



THREAD CUTTING TOOL ASSORTMENT HSS

Art. No. 5964065200

- Contents: 44 pcs.
- Taper taps in sizes M3, M4, M5, M6, M8, M10, M12.
- Second taps in sizes M3, M4, M5, M6, M8, M10, M12.
- Third taps in sizes M3, M4, M5, M6, M8, M10, M12.
- Dies in sizes M3, M4, M5, M6, M8, M10, M12.
- Die holders in sizes 20 x 5; 20 x 7; 25 x 9; 30 x 11; 38 x 14.
- Tap wrenches in sizes 1 and 2.

MATERIAL PROCESSING



CYLINDER SAW ASSORTMENT HSS SYSKO

Art. No. 5964063200

- Contents: 16 pcs.
- Quick and precision.
- Diameters of 19, 22, 25, 32, 35, 38, 44, 51, 57, 64, 67, 76 mm.
- Number of teeth: 6/inch.
- Cutting depth: 32 mm.



BANDSAW BLADE

Art. No. 0602403833

- One blade for any job.
- Bi-metal (carrier made of spring band steel, teeth made of cobalt steel M42).



BIMETAL SAW BLADE HSS

Art. No. 0603300133

- High-alloyed, high-speed steel on tooth edge, tough tool steel on ridge.
- Tooth edges of fully hardened material make for an unbeatable cutting performance and service life.
- Works faster, longer and more economically with only one saw blade.



UNIVERSAL MILLING DRILL

Art. No. 069814

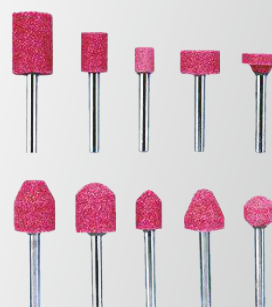
Cuts metal, wood and plastics and can also be used with hand drilling machines.



SPOT WELD CUTTER

Art. No. 06981

- Milling depth can be set by using the setting screw.
- Cutter crown can be used both sides.
- No tearing of sheet metal.
- No deformation.
- Quick and economical.



MOUNTED POINT SET KIT

Art. No. 068010

- Grinding Pencils for Coarse Grinding.
- Abrasive: specially fused alumina.
- Bond: ceramic.



STUD EXTRACTOR ASSORTMENT

Art. No. 06904211

- For driving in and extracting stud bolts with and without threads in seconds.
- Contents:
- 4 stud extractors: Dia (6, 8, 10, 12) mm.



SCREW EXTRACTOR ASSORTMENT

Art. No. 0695684353

- Chrome vanadium, forged.
- Contents:
- 5 screw extractors.
 - Sizes 1, 2, 3, 4 and 5 (M3-M18).

MATERIAL PROCESSING



HOSE CLAMP

Art. No. 0539...

- Asymmetrical housing.
- Even distribution of force.
- Clamp head does not tilt away during tightening.
- Smooth and indented strap interior with rounded edges.



JOINT BOLT CLAMP

Art. No. 0537125082...

- For hoses with a high level of hardness or inserts made of metal or plastic.
- Extremely high tightening force.
- Rounded edges/hose bridge.



PIPE CLAMP

Art. No. 054222 20...

- Fastening clamp with rubber profile.
- Reinforced tabs.



HOSE CLAMP RAPID

Art. No. 0547320032...

- Quick-release fastener.
- Clamping range (25–40 mm).
- Strap perforation cover/turned-up edges.
- Long hexagonal bolt.



ONE EAR CLAMP

Art. No. 0541175...

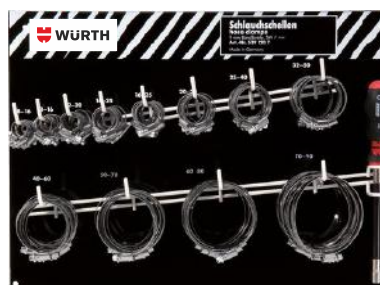
- Low overall height.
- Small clamping range.
- Precise installation, even in the tightest of spaces.



CABLE TIES

Art. No. 0502...

For quick, problem-free and reliable bundling of cables, cable harnesses, hoses, etc.



HOSE CLAMP SETS

Art. No. 05391207

- Asymmetrical housing.
- Even distribution of force.
- Clamp head does not tilt away during tightening.
- Smooth and indented strap interior with rounded edges.

MATERIAL PROCESSING



O-RING MOUNTING KIT ASSORTMENT 8 PCS

Art. No. 5964046806

Contents:

- Instant Adhesive Super-fast Glue
- 1C cutter knife with slider
- O-ring card 1M (D8,5,7,3,2.4,1.6)
- O-ring Cutting Jig



LETTER PUNCHES

Art. No. 0695941625

- Letter Punch DIN 1451.
- Character height: 5 mm.



MIG WELDING COIL

Art. No. 09820...

- Welding wire for MIG/MAG welding AWS/ASME - SFAS .18 copper plated.
- Suitable for single and multi - layer welding of unalloyed steel with tensile strength of up to 560 N/mm².

Available:

- 12.5 kg, 0.8 mm.
- 15 kg, 1.2 mm.



HEAT-SHRINKABLE TUB MED

Art. No. 097530510...

- Inside coated with hot-melt adhesive.
- Good physical, chemical and thermal properties.



ELECTRONIC SOLDER

Art. No. 0987111

- Flux as per DIN EN 29454-1/1.1.2.B.
- Processing temperature: 240 - 260°C.
- Melting range: 183 - 190°C.
- Low soldering temperature due to fast-flowing solder.



RING CONNECTOR, INSULATED

Art. No. 05589011

For very fine core copper conductor.



ELECTRICAL INSULATING TAPES

Art. No. 0985101...

- Safe insulation and labeling during electrical installation.
- VDE-tested in accordance with DIN EN 60454-3-1 Type 5



BUTYL SEALING TAPE, VEHICLE

Art. No. 0894700122

- Highly adhesive.
- Double-sided sealing tape made from butyl rubber for overlapping sealing.

Width(mm)	Length(mm)	Thickness(mm)
12	15	2
20	15	2



SEALING TAPE, INSTANT REPAIR TAPE

Art. No. 0985077230

- Highly resistant, self-fusing silicone tape for immediate repairs and sealing tasks.
- For repairing and sealing pipelines and hoses up to 8 bar (in Ø 1" pipes).
- For sealing/repairing heating pipes, cooling lines, fittings, water pipes etc.



MASKING TAPE

Art. No. 0992015024

- W: 24 mm x L: 50 mm, Thickness: 145 µm.
- Slightly crepe paper adhesive tape for general masking tasks.
- Excellent adhesion on smooth and painted surfaces
- For masking all smooth surfaces found in the construction and automotive sectors
- Resistant to moisture and solvents.

HAND TOOLS



COMBINATION SPANNER, CRANKED RING

Art. No. 0713301055

- Ring side drive: POWERDRIV bi-hex.
- Material: Chrome-vanadium steel.
- Surface: Chrome-plated, polished heads and ring.
- Geometry: Ring side angled 15°, head offset 15°.



RATCHET COMBINATION WRENCH

Art. No. 071425108

- Loosen bolts with the open end and tighten with the ratchet mechanism of the ring side.
- Drive: Ring side POWERDRIV, modified bi-hex, fine tooth, 72 teeth.
- Material: Chrome-vanadium steel.
- Surface: Polished, chrome-plated.



DOUBLE OPEN-END WRENCH SET – 8 PCS

Art. No. 0713304...

- Design: Metric.
- Material: Chrome-vanadium steel.
- Surface: Chrome-plated, polished heads.
- Geometry: 15° offset, strong, heavy-duty heads.
- Sizes: 6 - 22 mm.



ADJUSTABLE WRENCH

Art. No. 071522104

- Material: Chrome-vanadium steel, forged.
- Surface: Polished head.
- Geometry: 22.5° offset head, clockwise model with metric scale for rapid and reliable identification of width across flats.



DOUBLE RING WRENCH

Art. No. 071330521..

- Material: Chrome-vanadium steel.
- Surface: Chrome-plated, polished rings.
- Geometry: Ring sides offset 18°.



MULTI RATCHET COMBINATION WRENCH SET – 6 PCS

Art. No. 071425650

- The multiple profile is suitable for the five most common screw head drives (hexagon metric, square metric, bi-hex metric, hexagon inch, TX head).
- The 15° angle of the ring wrench provides more space for fingers and for overcoming obstacles.
- Drive: Ring side bi-hex, fine tooth, 72 teeth with reverse lever for clockwise and anti-clockwise running.



DOUBLE ENDED RING SOCKET WRENCH SET – 12 PCS

Art. No. 0714219020

- Design: Metric, straight.
- Drive: POWERDRIV bi-hex.
- Standard: DIN 837/ISO 1085.
- Material: Chrome-vanadium steel.
- Surface: Polished, chrome-plated.
- Geometry: Straight ring sides, 12° angle of rotation.
- Thin-walled heads, countersunk on both sides.
- Easy to use in the tightest of spaces.

HAND TOOLS



SLUGGING BOX WRENCH

Art. No. 071526146...

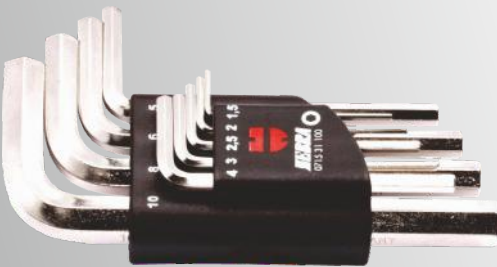
- Metric, straight.
- Tip: Bi-hexStandard: DIN 7444.
- Material: Special forged steel with high impact resistance.
- Surface: Steel grey.
- Geometry: Short, strong profile shaft and slugging end for the most demanding tasks.



OPEN-END SLUGGING WRENCH

Art. No. 071527...

- Metric, straight.
- Standard: DIN 133.
- Material: Special forged steel with high impact resistance.
- Surface: Steel grey.
- Geometry: Short, strong profile shaft and slugging end for the most demanding tasks.
- Head offset 15°.



ALLEN KEY SET

Art. No. 071531100

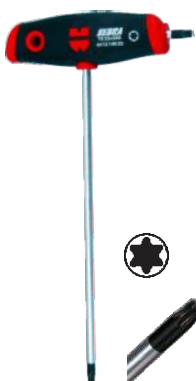
- Bright nickel-plated.
- Chamfered front edges.
- Size: 1.5, 2, 2.5, 3, 4, 5, 6, 8, 10 (mm).



DOUBLE SOCKET WRENCH

Art. No. 0714241011

- Drive: Hexagon, metric.
- Standard: based on DIN 896.
- Material: Chrome-vanadium steel, solid forged.
- Surface: Matt chrome-plated.
- Polished heads.
- Shaft: Hexagon.
- Geometry: Drilled end-to-end to facilitate insertion of long threaded rods.



T-HANDLE TX WITH SIDE TIP

Art. No. 0613140...

- Inner TX
- Blade: Round blade with side tip, matt chromeplated
- Tip: Inner TX
- Black Point



T-HANDLE SOCKET WRENCH

Art. No. 061312...

- For hexagon head screws.
- Blade: Round blade, chrome-plated.
- Inner bore for protruding threaded shafts.
- Standard: DIN 3125.
- Tip: DIN 475/2.



T-HANDLE WRENCH, HEXAGON SOCKET

Art. No. 061313...

- Side tip.
- Blade: Hexagon blade with side tip, matt chrome plated.
- Tip: Size similar to DIN 911.

HAND TOOLS



GUN MAGAZINE SCREWDRIVER SET – 37 PCS

Art. No. 061364037

- 2-component gun grip for ergonomically-optimized working conditions.
- LED technology.
- High-performance ratchet screwdriver.
- Sealing cap with bit magazine of total six bits.



GUN MAGAZINE SCREWDRIVER

Art. No. 0613640...

- With LED light, empty.
- High-performance ratchet screwdriver.
- 2C grip for optimum ergonomic work.
- Inclusive of 6 bits.



T-HANDLE RATCHET SCREW DRIVER SET – 21 PCS

Art. No. 0613630400

- High-performance ratchet screwdriver.
- Large number of different reversible blades, adapters, bit holders and socket wrench inserts.
- High-quality reversible blades.



SLOTTED SCREWDRIVER

Art. No. 0613321055...

- One-piece hexagon blade/wrench adapter made from tempered, impact-resistant material.
- Large impact cap.
- Tip: DIN 5264-A, ISO 2380, Black Point.



PHILLIPS SCREWDRIVER

Art. No. 0613322...

- Screwdriver with one-piece hexagon blade/wrench adapter made from tempered, impact-resistant material.
- Large impact cap.
- Tip: DIN 5260-PH, ISO 8764-PH, Black Point.



VDE SCREWDRIVER, AW DRIVE

Art. No. 06136372...

- Blade: Burnished, insulated.
- Tip: AW profile.



TX SCREWDRIVER

Art. No. 0613434...

- Blade: Round blade, matt chrome-plated
- Tip: TX socket, Black Point



PZ SCREWDRIVER

Art. No. 0613423...

- Hexagon blade, wrench adapter.
- Blade: Matt chrome-plated.
- Tip: ISO 8764-PZ, Black Point.



MAGAZINE SCREWDRIVER

Art. No. 0613600...

- Handle: 2-component handle.
- Blade: Round blade with magnet, bright chrome-plated.
- Tip: DIN 3126-D 6.3.
- Very slim magazine screwdriver for optimum power transfer and comfortable handling.



DRIFT SET – 14 PCS

Art. No. 0965900701

Contents:

- Punch: dia. size 1, 2, 3, 4 mm.
- Centre punch: 120 mm.
- Piloted splint driver: 180 mm.
- Splint driver: dia. size 2, 3, 4, 5, 6, 8 mm.
- Flat chisel: L=125 mm; W=15 mm.
- Grooving chisel: L=125 mm; W=5 mm.



UNIVERSAL PULLER SET

Art. No. 071452 500

- For 6 different twin leg and triple leg pullers.
- Generous range of equipment for modular system configuration.
- Contains: One each of twin and triple leg cross-beam, 9 hooks in 3 sizes, 1 spindle.

HAND TOOLS



COMBINATION PLIERS

Art. No. 071401 556...

- For gripping, holding and cutting hard and soft wires and cables.
- High-quality tool steel ensures long tool life and precision of gripping and cutting surfaces.
- Extra-long blade also suitable for thicker cables.
- Ergonomic and slip-free 2-component comfort handle with narrow collar profile for comfortable working and optimum force transfer.
- Burner port for gripping round materials.



POWER SIDE CUTTER

Art. No. 07140...

- Ergonomic and slip-free 2-component comfort handle with narrow collar profile for comfortable working and optimum force transfer.
- Surface: Entirely ground and chrome-plated.
- Joint: Lap joint, forged on rivets.



SNIPE NOSE PLIER

Art. No. 07140...

- For gripping, holding and cutting soft and hard wires and cables.
- Blades: Additional inductive hardening.
- Surface: Entirely ground and chrome-plated.
- Gripping surfaces: Toothed.
- Joint: Lap joint.



VDE COMBINATION PLIER

Art. No. 071401 576...

- For gripping, holding and cutting hard and soft wires and cables.
- VDE combi pliers DIN ISO 5746 IEC 60900 2C handle.
- For working on live parts up to 1000 volts (AC) and up to 1500 volts (DC), observing all prescribed safety precautions.



CIRCLIP PLIERS FOR SHAFT CIRCLIPS

Art. No. 071402...

- TYPE B/B/D/D.
- Type: B (10-25 mm)/B (19-60 mm)/ D (12-25 mm)/ D (19-60 mm).
- Handle: Plastic coated.



PLIERS SET KIT BLACK & RED – 5 PCS

Art. No. 071501 56

- Double-dipped, ergonomic, anti-slip comfort handle for pleasant working conditions and optimal force transmission.
- Snipe Nose Plier - L 200 mm, Side cutter - L 180 mm, Combination plier - L 180 mm, End cutting nippers - L 160 mm, Stripping plier - L 160 mm.

HAND TOOLS



CLIP REMOVAL PLIERS

Art. No. 0714500

- Simple removal of decorative trim, fender rubber, door paneling, etc.
- Does not damage door paneling.
- Removed clips can be re-used.
- Blade opening: 11 mm.
- Length: 280 mm.



UNIVERSAL SHEARS

Art. No. 0714031028

- Universal straight-cutting leverage snips.
- Extra long, laterally stepped blades.
- Stainless steel cutting head.
- Robust, maintenance-free, bright nickel-plated steel handle.
- Angled cutting head.



CRIMPING PLIERS

Art. No. 0714107114

- For non-insulated cable connectors.
- Parallel crimping jaw guidance with ratchet release.
- 30% reduction in hand force.
- Number of crimping points: 3.
- Length: 215 mm.



BOLT CUTTER

Art. No. 071406 910

- Forged jaws.
- For materials up to 40 HRC.
- Rugged pipe legs with PVC handles.
- Eccentricity bolt for adjusting jaws.
- Length: 910 mm.
- Material: Steel.
- Material of the grip handle: Polyvinyl chloride.



CRIMPING PLIERS WITH INTEGRATED HOLDER

Art. No. 0714107130

- Crimping pliers exclusively for processing cable connectors in conjunction with single wire seals.
- Two crimping points: 0.35–0.5 mm² and 0.75–1.5 mm².



WORKSHOP FILE SET

Art. No. 071461 90

- Contents:
- Flat blunt.
 - Semi-circular.
 - Circular.
 - Triangular.
 - Square.

HAND TOOLS



CLUB HAMMER

Art. No. 0714734510

- Mallet with plastic shaft.
- Robust and manageable for the most demanding applications.



SLEDGE HAMMER

Art. No. 0715732300

- Material: Steel.
- Hammer Weight: 3000 gm.
- Material of the handle: Wood.
- Length of handle: 600 mm.



MECHANICS HAMMER

Art. No. 0714732403

- Robust 3-component hammer handle for use in the toughest conditions.
- Vibration-free working.



NON-REBOUNTING HAMMER

Art. No. 071572 52

- Nylon head inserts.
- Casing filled with steel shot.
- As the hammer strikes, the steel shot delivers additional blows.
- No power loss due to rebounding.



SIMPLEX SOFT FACE HAMMER

Art. No. 0715721

- Soft face hammer with custom equipment.
- Impact insert combination creates 2-in-1 soft face hammer.
- Includes inserts: Black rubber composition and red plastic.



METAL BOW SAW, LIGHT

Art. No. 071464 02

- Light and manageable metal bow saw with aluminium handle.
- Robust and extremely scratch-resistant.



METAL BOW SAW, ERGONOMIC

Art. No. 05760071001

- Ergonomic, aluminium die cast metal bow saw.
- Extremely robust and highly scratch-resistant.
- Prevents hand slipping from saw.
- Two saw blade positions (45° and 90°).

HAND TOOLS



MINI UNIVERSAL SAW

Art. No. 071464 03

- Aluminium frame, makes it light and easy to handle.
- Six fixed blade-adjustment options.



WIRE BRUSH

Art. No. 0697140

- Design: Stainless 0.35 mm, smooth.
- Number of rows: 3.



1/4" RATCHET

Art. No. 07120140

- Rotary disc reverse.
- Compact, narrow head.
- Simple changeover from clockwise to anticlockwise rotation.
- Chamfer on square - easier removal of socket wrench inserts.
- Offset ratchet body for more hand clearance.
- Fine tooth rotary disc with 72 teeth; 5° angle of rotation.
- Length: 135 mm.



UNIVERSAL SAW

Art. No. 060910

- For sawing in hard-to-reach places.
- Handle can be adjustable by turning.



SMALL SAW ARC

Art. No. 0609...

- With universal small saw blade.
- 32 teeth per inch.
- 145 x 6 x 0.45 mm.



1/2" REVERSIBLE RATCHET

Art. No. 071201201

- Fast, simple reversing of clockwise and counterclockwise rotation with lever.
- Coarse toothing with 48 teeth - 7.5° rotating angle.
- 12.5 Drive with Ratchet length as 250 mm.
- Safety lock with quick ejector - locked & unlocked.



1/4" RATCHET - LEVER

Art. No. 071201401

- Fast, simple reversing of clockwise and counterclockwise rotation with lever.
- Coarse toothing with 48 teeth - 7.5° rotating angle.
- 6.3 Drive with Ratchet length as 135 mm.
- Safety lock with quick ejector - locked & unlocked.



TORQUE WRENCH

Art. No. 071471 21

- Switchover square drive.
- Accuracy of $\pm 3\%$ to the set value, to ISO 6789:2003.
- Simple and precise setting by turning the handle.
- Scaling in Nm and also in pound force per square foot.
- Acoustic and tangible torque triggering prevents over-tightening of bolts.



3/8" JOINTED HEAD RATCHET

Art. No. 071512 14

- Model: Chrome-plated.
- Head: Joint rotatable by 180 degree.
- Jointed-head ratchet can be extended using locking sleeve.

HAND TOOLS



TOOL CASE ELECTRIC AND HYBRID VEHICLE SYSKO 16 PCS

Art. No. 5964502001

- 16 pieces in system case 8.4.1.
- Especially suitable for electric and hybrid vehicles.



3/8" SOCKET WRENCH ASSORTMENT

Art. No. 096512 34

- Contents: 34 pcs.
- Reversible ratchet.
 - Extension, 75 mm.
 - Extension, 250 mm.
 - Cardan joint.
 - 14 socket wrench inserts, short: Sizes 8, 9, 10, 11, 12, 13, 14, 15, 16, 17, 18, 19, 21, 22 mm.
 - 8 socket wrench inserts: E 5, 6, 7, 8, 10, 11, 12, 14 mm.
 - 8 TX socket wrench inserts: TX 15, 20, 25, 27, 30, 40, 45, 50 mm.



1/2" & 1/4" SOCKET WRENCH SET

Art. No. 09651756

- Contents: 56 pcs .
- 1/4"
- Ratchet.
 - Extension, 100 mm.
 - Extension, 150 mm.
 - Cardan joint.
 - 12 Socket wrenches: 4; 5; 5.5; 6; 7; 8; 9; 10; 11; 12; 13; 14 mm
- 1/2"
- Ratchet.
 - Extension, 125 mm.
 - Extension, 250 mm.
 - Cardan joint.
 - 19 Socket wrenches: (10 - 32) mm.
 - Handle, 1/4".
 - Adapter with quick-change chuck.
 - 15 Bits: PH 1, 2, 3; slotted 0.8 x 5.5 mm; Internal hex. 3, 4, 5, 6 mm.
 - TX 10, 15, 20, 25, 27, 30, 40 mm.



UNIVERSAL TOOL CASE

Art. No. 096593 120

- Contents: 91 pcs.
- ZEBRA combination wrench, 11 parts: 8-22 mm.
 - Combination pliers: 180 mm.
 - Hammer, 400 g.
 - Water pump pliers, 250 mm.
 - Voltage tester 3.0 mm, 150-250 volts.
 - 1/4" ratchet, cardan joint, extension 50 + 100 mm, socket wrench insert, 12 pcs: (4-14) mm.
 - 1/2" ratchet, cardan joint, extension 125 mm + 250 mm, socket wrench insert, 19 pcs: (10 - 32) mm.
 - Screwdriver 1/4" square, screwdriver, slotted, 0.6 x 3.5 x 100 mm, 1.2 x 6.5 x 150 mm.
 - Screwdriver PH 1, PH 2.
 - Bit assortment, 30 parts.

PNEUMATIC TOOLS



PNEUMATIC MULTI CUTTER

Art. No. 0703 862 1

- Powerful unit used for removing adhered car windows, for vehicle body cutting tasks and for grinding corners and edges.
- Versatile hexagonal mount, Oscillating movement.
- Blade oscillation (0 - 20,000) rpm.
- Average air consumption 370 L/min.



PNEUMATIC JIGSAW

Art. No. 0703881

- Robust body saw for long operating times and tough applications.
- Ideal for cutting aluminium, plastic, fibreglass (max. 4 mm) and sheet metal up to 1.6 mm.
- Saw blade rotates through 180° for working overhead.
- Strokes: 10000 rpm.
- Weight: 0.68 kg.



PNEUMATIC VARIO DRILL VD 90

Art. No. 0703090...

- For fast, convenient removal of spot welds.
- The 360° rotatable contact bail prevents slipping and ensures easy working, even in hard-to-reach places.
- Low speed 800 rpm.
- High Torque.



PNEUMATIC DRILL

Art. No. 07037960

- Especially lightweight, handy drill with quick-action drill chuck.
- Right/left changeover with 10-mm drill chuck.
- Max. idle speed: 1700 rpm.
- High-quality drill chuck.
- Precision planetary gear for maximum power transmission and long service life.



PNEUMATIC RIVETER

Art. No. 070393722

- Handy, compact pneumatic unit for processing blind rivets, with rivet mandrel extractor activated by a lockable sliding switch.
- Can be used to process blind rivets with a diameter of 2.4 mm–5.0 mm made of any material, and limited use for blind rivets with a diameter of 6.0 mm made of aluminium/steel.
- Maximum mandrel diameter: 3.2 mm.
- Patented gripping jaw system.
- Rivet setting force: 9000 N.
- Minimal compressed-air consumption.
- Over-pressure valve prevents overload.

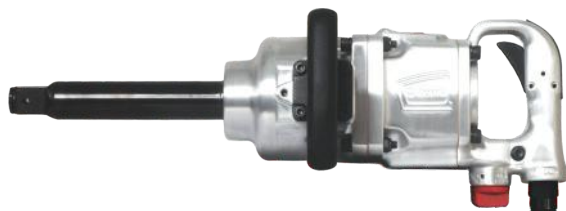


PNEUMATIC RATCHET

Art. No. 07038120

- Durable ratchet screwdriver with speed regulation and plastic handle to protect against vibrations and cold hands.
- Precision planetary gear.
- Max. torque: 70 Nm.
- Right/left changeover switch recessed.
- Swivelling compressed-air connection.

PNEUMATIC TOOLS



1" PNEUMATIC IMPACT WRENCH, LONG

Art. No. 07037700

- Rugged and powerful impact wrench with long drive square.
- 4 tightening torque levels (996 - 1870) Nm.
- Max. Loosening torque 2440 Nm.
- The device is very handy and user-friendly.
- High-quality pin-less hammer striking mechanism.
- Relatively low air consumption despite the dependable maximum power values and long service life.



1" PNEUMATIC IMPACT WRENCH, SHORT

Art. No. 07037760

- Extremely rugged and powerful impact wrench with quick torque buildup.
- Ideal for service work on trucks and buses, as well as on construction and agricultural machines.
- 4 tightening torque levels (895 - 1694) Nm.
- Max. releasing torque 2440 Nm.



3/4" PNEUMATIC IMPACT WRENCH

Art. No. 07037730

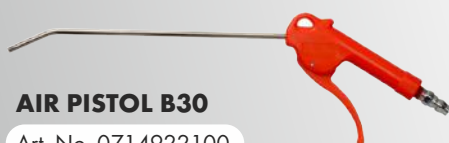
- Reliable, powerful impact screwdriver with fast build-up of torque.
- High-quality pin impact mechanism in oil bath with 6-disc motor.
- 4 stage torque control.
- Operating Torque: (350 - 1440) Nm.



AIR PISTOL B90

Art. No. 071499210

- High flow air gun with metal reinforced inlet.
- Max. working pressure: 15 bar.



AIR PISTOL B30

Art. No. 0714922100

- Max. working pressure: 150 psi



1/2" PNEUMATIC IMPACT WRENCH

Art. No. 07037560

- Outstanding power-to-weight ratio.
- High performance twin hammer impact mechanism and heavy duty hammer system provides up to 860 Nm of maximum torque in reverse.
- Six-position power management operated by turn-knob in forward & reverse.



FILTER REGULATOR LUBRICATOR

Art. No. 069910112

- Filter, Regulator, Oiler combination. Supplies clean, regulated, oiled air and increase the performance and service life of your tools.
- High degree of cleaning of the compressed air, filter element 5 µm.



FILTER REGULATOR

Art. No. 06991011...

- No flow loss and no problems with leaks.
- Easy mounting & minimal space requirement.
- High degree of cleaning of the compressed air.



COUPLERS & FITTINGS

Art. No. 0699...

- Connection take only few seconds.
- For universal use.
- Made of Brass and Steel.



PNEUMATIC SPIRAL HOSE

Art. No. 0699940610

The highly flexible, fabric reinforced PVC hose for highest demands in the area of compressed air.



PNEUMATIC HOSE DRUM

Art. No. 0699999007/8

- Length: 100 mm
- Max. working pressure: 120 psi
- Colour: Blue & Yellow
- Material: Polyurethane

PNEUMATIC TOOLS



PNEUMATIC CHISEL HAMMER

Art. No. 07037121

- Extremely robust, powerful chisel hammer with Max. Impact rate 2900 rpm.
- Rugged, partially rubberised housing.
- Anti-slip, ergonomic handle with adjustable trigger.
- Includes retaining spring and alternative quick-action chuck and 5 chisels made from special steel.



PNEUMATIC AXIAL SCREWDRIVER

Art. No. 0703413

- Adjustable friction clutch for precise torque control (2.2 - 10) Nm.
- 1/4" bit quick-action chuck. Right/left rotation changeover.
- Good speed control via sensitive trigger, rotation speed 1800 rpm.
- Exhaust air conducted to the rear with exhaust air system connection.



PNEUMATIC DIE GRINDER

Art. No. 07032290

- 6 mm and 1/4" collet in the delivery scope
- Built-in regulator .
- Light weight and compact design for easy one-hand operation.
- Ideal for grinding edge-breaking, deburring and polishing.
- Safety Throttle Lever to prevent accidental start up.
- Rear Exhaust.



PNEUMATIC ANGLE GRINDER

Art. No. 07038570

- Powerful 0.85hp (640W) high performance motor for fast, efficient grinding in tight quarters.
- Bevel gearing in angle head provides extended life and smooth low vibration.
- Excellent for weld preparation and smoothing, rust removal, deburring and blending of steel, cast iron and aluminium.



PNEUMATIC ROD GRINDER

Art. No. 07032310

- Rod grinder developed especially for the toughest applications (e.g. deburring work) with high power reserves.
- Long-life, handy rod grinders with toolfree speed control and rubber-coated handle against vibrations and cold hands.
- Max. idle speed: 22000 U/min(rpm).
- Power output: 224 W.



PNEUMATIC BELT SANDER

Art. No. 07032810

- Tool with high removal capacity, ideal for sanding, removes burrs and rust.
- Adjustable arm up to 360 °
- Arm Holder with integrated spring that keeps tension on the sanding belt.
- Quick and easy replacement of sanding belt.
- Swivel Air Inlet.
- Silencer for low noise.
- Three additional P 60 sanding belt.



PNEUMATIC ORBITAL SANDER

Art. No. 0703 999 010 (Central Vacuum)

Art. No. 0703 999 009 (Self Vacuum)

- Sanding of putty, fillers, paint finishes and primers.
- Also for grinding of wood, plastic material, non-ferrous metal, steel sheet metal, glass and earthenware, building material etc.
- Dust extraction with vacuum cleaner for Central Vacuum Machine.
- Self Vacuum Machine provided with dust collection bag and hose.



EQUIPMENTS



VACUUM CLEANER – 32 L, WET & DRY

Art. No. 0702400802

- Single Motor Vacuum Cleaner, Ideal for any type of floors or carpeted surface to remove dry dusts and wet spills.
- Sturdy high grade stainless steel body.
- Cylindrical filter for optimum dust filtration.



HIGH PRESSURE JET CLEANER 215

Art. No. 0701160500

- High pressure powerful cleaning system for automotive, construction, industries etc.
- Heavy duty pump powered by 3 phase.
- Equipped with total stop control.
- Operating pressure of 30 to 215 bar.



VACUUM CLEANER – 78 L, WET & DRY

Art. No. 0702400803

- Heavy duty 1300 x 2 (2600) Watt motor for toughest application.
- Sturdy high grade stainless steel body.
- Trolley with 2 fixed big wheels and 2 swivel wheels for easy maneuverability.
- Uniquely designed Tilting Drum enables easy disposal.



A/C SERVICE STATION 1200i (R-134a)

Art. No. 0900764991

- Fast and efficient unit that makes servicing mobile a/c systems SIMPLE, PRECISE and SAFE.
- The system provides electronically controlled functions whilst keeping the operator constantly informed and in full control.
- The unit is suitable for servicing passenger and light commercial vehicle air-conditioning systems.
- Refrigerant Recovery & Recycling.
- Oil and/or UV Dye Injection.
- Refrigerant Charge.
- Automatic Cycle Mode.



DUST EXTRACTION SYSTEM

Art. No. 0702400801

- For dust extraction with sanding systems in automotive bodyshop, metal work, wood industries etc.
- Three equipments (Two Pneumatic and One Power Tool) can be used simultaneously.
- Continuous filter cleaning results in constant high vacuum power.
- Can also be used with hand sanding blocks with dust extraction systems.
- Trolley with 2 fixed big wheel and swivel wheels for easy maneuverability.
- Ergonomically designed tool tray provided with machine.
- Max power: 2400 W.



EQUIPMENTS



AIR COMPRESSOR K 290

Art. No. 07012290

- Extremely reliable, rugged and long-lasting mobile compressor for professional use on construction sites and in the workshop.
- Control panel with manometer, pressure regulator and quick-action couplings.
- Motor output: 2.2 kW.
- Max. pressure: 10 bar.
- Tank capacity: 20 L.
- Weight of machine: 33 kg.
- Number of quick-action couplings: 3 pcs.



SPOT DENT PULLER

Art. No. 0691500177

- Mainly used in automobiles.
- For quick removal of dents.
- Saves time and material.

Standard accessories:

- Sliding hammer.
- Washer welding tip.
- Long washers.
- Claw jaw hammer.
- Zig-zag welding tip.
- Copper triangle tip.
- Zig-zag wire.
- Washers for welding.
- Carbon rod.



MIG WELDER 400 A

Art. No. 5952001400

- Digitally controlled synergic inverter with latest IGBT technology.
- Synergy mode provides predefined welding parameters according to amperage, wire dia. and gas used.



COMPRESSOR POWER 50 L

Art. No. 07012250

- Powerful, robust V-belt piston compressor for flexible applications within the workshop.
- Low speed and quiet running.
- Adjustable working pressure and good air quality.
- Motor output: 2.2 kW
- Max. pressure: 10 bar
- Tank capacity: 50 L



PLASMA CUTTER

Art. No. 0691500410

- Compressed air plasma cutting system.
- Torch Automatic Cooling, cutting following materials Mild Steel, Stainless Steel, Aluminium, Copper, etc.
- Very Low Air Consumption 60 l/min at 3.5 bar.

EQUIPMENTS



TOOL CASE STANDARD

Art. No. 071593 20

- Type: 5 pcs.
- Simple, solid design.
- Length x width x height: 430 x 200 x 200 mm
- Collapsible, with robust rivet hinges.
- Foldable hollow carrying handle.
- Can be locked with a padlock.



TOOL CASE PROFESSIONAL

Art. No. 071593 22/23/24

- Type: 3/5/5 pcs.
- Highly robust and torsion-resistant.
- Length x width x height: 430 x 200 x 150 mm.
- Folding, with sturdy riveted hinges.
- Folding tubular carry handle.
- Cover with continuous strap hinge.
- Can be locked by a padlock.



TOOL CASE

Art. No. 071593 170

- Made from sheet steel, robust design with reinforced lid.
- Length x width x height: 690 x 360 x 310 mm.
- Lid compartment for drawings.
- Small components insert with spirit level holders.



TOOL BAG

Art. No. 071593 65

- Roll-out bag with 19 pockets in 2 rows.
- Black synthetic leather.
- 2 snap locks.
- Width: 420 mm.
- Height: 210 mm.
- Product weight (per item): 417 g.
- Material: Faux leather.



WORKSHOP TROLLEY BASIC

Art. No. 5584699005

- 1-drawer: 568 x 398 x 60 mm.
- 4-drawer: 568 x 398 x 124 mm.
- Total load: 250 KG.
- 45mm ball bearing slides, static loading capacity 25KG per drawer.
- Central locking with cylinder lock.
- Two running wheel and two steering wheel with locking brakes.



WORKSHOP TROLLEY W8

Art. No. 0962638018

- Equipped with 166 pieces (4 Tool Set) in four drawers.



WORKSHOP TROLLEY, M-SERIES 5 DRAWER & 7 DRAWER

Art. No. 0962699215 (5 DRAWER)

Art. No. 0962699207 (7 DRAWER)

- 930 x 710 x 410 mm (H x W x D).
- Solid sheet steel design.
- ABS top tray with recesses for small parts.
- Two steering wheels, 100 mm dia., one wheel with locking.
- Load capacity: 300 kg (both).

SAFETY PRODUCTS



SAFETY GOGGLE, POLYCARBONATE

Art. No. 0899102230

- Unrestricted peripheral perception through panoramic lens with 180° field of view.
- Polycarbonate lens with matt roof section to suppress reflections.
- 100% UV protection (up to 400 nm).



SAFETY GOGGLE, CEPHEUS

Art. No. 0899102250

- Lightweight safety goggles with duo-spherical lens.
- Sporty flexible arms for pressure-free fit.
- Unrestricted side perception.
- Highly impact-resistant polycarbonate lens.
- 100% UV protection (up to 400 nm).



SAFETY GOGGLE, FULL-VISION

Art. No. 0899102110/111 (Replacement lens)

- All-round ventilation system.
- Frosted frame suppresses light reflections.
- Suitable for combining with half face masks.
- Acetate lens resistant to chemicals.
- Anti-fogging coating.
- Easy-change lens and 100% UV protection.
- Adjustable head strap.



SAFETY EYE WEAR

Art. No. 0899103120/121/122

- First class Polycarbonate lens.
- Sporty & dynamic design.
- Nylon frame with optional color lenses.
- Excellent anti-scratch & impact resistance.
- UV Protection upto 99%.
- For construction, grinding, milling, etc.



SAFETY HELMET

Art. No. 0899200230/231

- Durable HDPE shell.
- 6 point pin lock suspension for secure fitting.
- Colours: Yellow & White.

Application area:

- Construction, Metal Industry, Automotive, Cargo, Hospitality, Facility services.



FACE PROTECTION SCREEN

Art. No. 0899101202

- Perfect protection for grinding and cutting work, as well as against dripping or splashing liquids.
- Large, resistant polycarbonate visor with wide field of view.
- Multiple visor inclination adjustment settings.
- Soft padding on all parts with head contact.



WELDING SCREEN WITH HEAD GEAR WITHOUT GLASSES

Art. No. 071382 101

- Glass size 90 x 100 mm
- Fibreglass-reinforced plastic.
- Heat resistant and impermeable to irradiation.
- Resistant to splashes and melting.
- Stepless size adjustment of the head gear.



WELDING HELMET - SOLAR AUTO DARKENING

Art. No. 984700200

- Viewing Area: 98.00 x 44.00 mm.
- UV/IR protection: up to Shade DIN 16 at all times.
- Arc Sensor: 2.
- Light state: DIN 3.5.
- Variable shades: DIN 9 to 13.
- Shade control: External adjustable.
- Power Supply: Solar cells, no battery change.
- Power On/Off: Fully Automatic.

SAFETY PRODUCTS



PROTECTIVE GLOVE, COTTON KNITTED – PVC DOTTED

Art. No. 0899404318

- 7 Gauge polycotton knitted glove, with one side red PVC dots on the palm.
- Grey shell: 65% polyester & 35% cotton.
- Red dots, 100% PVC.
- Good grip performance.
- Good wearing comfort & fit.

Applications:

Basic working glove for light warehouse work, transportation, glass/ceramic industry (Handling large panes or dry metal).



PROTECTIVE GLOVE, COTTON KNITTED

Art. No. 089940014...

- 7 gauge grey poly/cotton recycled yarn knitted gloves (50 g & 60 g).
- 100% white polyester over locking.
- Good wearing comfort & fit.

Applications:

Basic working glove for light warehouse work, transportation, glass/ceramic industry (Handling large panes or dry metal).



PROTECTIVE GLOVE, TOP ALL-COWHIDE LEATHER

Art. No. 0899402...

- Rugged work glove made from high-quality full-grain cowhide.
- Good flexibility and grip.
- Backs of hands and cuffs made from heavy cotton fabric.
- Backs of hands elasticated for more safety.



PROTECTIVE GLOVE, SPLIT COWHIDE LEATHER

Art. No. 0899400251

- Robust working glove made of split cowhide leather.
- Backs of hands made from heavy cotton fabric.
- Knuckle guards and fingertips made from split leather.
- Rubberised cuffs.
- Double-stitched.
- Cotton half-lining.
- Good resistance to abrasion and cuts.



PROTECTIVE GLOVE, MECHANIC

Art. No. 0899400529

- Universal glove with good functional resistance and excellent dry and wet grip via special surface texturing.
- Outstanding flexibility for fine installation work.
- Skin-friendly, seamless knitted nylon lining.
- High-quality natural latex coating with open backs of hands for good breath ability.



PROTECTIVE GLOVE, CUTTING WITH DYNEEMA® FIBER

Art. No. 0899400740

- High degree of abrasion resistance and mechanical resistance.
- Excellent thermal conductivity of Dyneema® fibre. Handling sharp work pieces and tools.
- Protects hands from contaminants and mechanical strain to the skin.
- Cut 3/100.
- CAT. II / EN388 Performance level: 4.3.4.3



PROTECTIVE GLOVE, CUTTING WITH KEVLAR®

Art. No. 0899400409

- Seamless, round-knit carrier fabric made of 100% Kevlar®.
- Good grip thanks to laminated natural latex coating on inner surfaces of hand, thumbs and fingers.

Applications:

- Glass industry, Recycling plants, Metal press plants, metalworking, Plastic industry, Paper and cardboard industry.
- CAT. II / EN388 Performance level: 4.3.4.3

SAFETY PRODUCTS



DISPOSABLE NITRILE GLOVE

Art. No. 089947001

- Liquid-proof, food-safe disposable glove.
- Applications:
- Laboratory work.
- Food processing industry.
- Catering.
- Pharmaceutical and chemical industry, electrical engineering.
- Decorating, spray-painting and polishing.
- Cleaning and maintenance work.
- Workshop jobs.



DISPOSABLE NITRILE GLOVE, EXTRA STRONG

Art. No. 0899470409

- Free of natural rubber.
- Does not contain allergy-triggering latex proteins.
- Good grip via roughened surface.
- Tested as food-safe.
- Material thickness: 0.20 mm \pm 0.01 mm.



PROTECTIVE GLOVE, BUTYL CHEMICAL

Art. No. 089943030...

- Gas-tight and resistant to exhaust gases produced by combustion processes.
- Outstanding protection against dangerous chemicals.
- Good mechanical resistance.



DISPOSABLE VINYL GLOVE

Art. No. 0899460...

- Powder-free, Liquid-sealed disposable vinyl glove.
- Practical disposable dispenser.
- Can be worn on both sides.
- Tested as food-safe.
- Material thickness: 0.12 mm \pm 0.03 mm.



PROTECTIVE GLOVE, YELLOW NITRILE

Art. No. 08994100...

- Nitrile coating on sealed cotton interlock lining with knitted wristband.
- Good abrasion resistance.
- Repels liquid, oil and grease.
- Very good dry grip.
- Cat. II/EN388 Performance level: 3.1.1.1



ARM GUARD GLOVE WITH THUMB HOLE

Art. No. 0899 400 4..

- Ideal cutting and heat-protection for the heel of the hand, wrist and forearm areas.
- Two-layer, seamless round-knit fine fabric design made of 100% Kevlar®.



COTTON JERSEY GLOVE

Art. No. 899400140

- Good heat and cold protection.
- Can be worn on both sides.
- Seamless, round-knit carrier fabric made of 100 % Kevlar®.

SAFETY PRODUCTS



BREATHING MASK, FFP 1

Art. No. 0899110400

- Excellent fit on the face.
- Secure seal in the nose area.
- Comfortable to wear.
- Excellent filter performance.
- Tear-resistant head straps.
- Without exhalation valve.
- CE 0, 194.



BREATHING MASK WITH VALVE

Art. No. 0899110501

- Complete protection and comfortable to wear.
- Exhalation valve ensures the user feels comfortable wearing the mask.
- Minimal breathing resistance.
- Perfect, sealed fit.
- Preformed design.
- Nose clip for optimised fitting.
- Half sealing lip in the nose area.
- Looped-through cotton head strap.



BREATHING MASK, FFP 2

Art. No. 0899121

- Minimal breathing resistance.
- Perfect, sealed fit.
- Preformed design.
- Nose clip for optimised fitting.
- Half sealing lip in the nose area.
- Looped-through cotton head strap.
- CE 0, 194.



PAINTER'S SET - 3 pcs

Art. No. 0899175020

- 1 x half mask facepiece HM 175.
- 2 x Combination filter A2P3 RD
- Ready-for-use breathing protection set for painting and decorating work.



BREATHING MASK FOLDABLE

Art. No. 0899110200

- Folds completely flat.
- Complete protection and comfortable to wear.
- Minimal breathing resistance.
- Nose clip for optimised fitting.
- Half sealing lip in the nose area.
- Looped-through cotton head strap.



EAR PLUG, CORDED X100

Art. No. 0899300332

- Ergonomic, cone-shaped disposable ear plugs for use in extremely noisy environments.
- Very good insulation.
- Excellent speech audibility.
- Very comfortable to wear.



EAR PLUG, CORDED

Art. No. 0899300338

- Soft fins make these ear plugs very comfortable to wear.
- High noise insulation with good signal and voice detection.
- Supplied in a practical storage box.

SAFETY PRODUCTS



SAFETY WARNING VEST

Art. No. 0899078/002

- With hook-and-loop closure.
- 100% polyester.
- Two 5-cm wide reflective strips around the circumference.
- Individually packaged in poly bags.



WELDER'S APRON

Art. No. 0984312/13

- With chest flap.
- Universally adjustable leather straps.
- Smooth surface.



WELDER'S LEGGING

Art. No. 0984317

- Made from split leather.
- With sole and stirrup.
- With two buckled belts.
- Shaft height approx. 40 cm.



OVERSHOE

Art. No. 08990281

- Overshoes for hygiene and dirt protection in chemical industry, pharmaceuticals, cosmetic manufacturing, food processing.
- Material thickness: 20 µ.
- Material: Polyethylene.
- Universal size: Length 40 cm.



REUSABLE PAINTING SUIT

Art. No. 089902501...

- With hood and drawstring.
- Silicone-free & 100% polyester.
- Anti-static and lint-free.
- Elasticated sleeves, ankles and waist.
- Two-way covered zip.
- Washable up to 40°C or dry cleaning.



SAFETY SHOE, S1P (Grey Sole)

Art. No. 5357121...

- Buffalo black leather Upper NON DIN (Non-Waterproof) synthetic non-woven vamp lining.
- Dual density PU injection out sole black.
- S1P standard.
- Anti-Impact, Anti-static, Anti -Penetration, Oil resistant, Shock absorbent.

CE S1P EN ISO 20345:2011



SAFETY SHOE, S1

Art. No. 5357943...

- Buffalo black leather Upper NON DIN (Non-Waterproof) synthetic non-woven vamp lining.
- Full mesh black lining.
- Single density PU injection out sole black.
- S1 standard.
- Anti-Impact, Anti-static, Oil resistant, Shock absorbent.



IS 15298: Part 2: 2011

POLISHING OF PAINTED SURFACE



SANDING BLOCK

Art. No. 0586 200 0

- For waterproof abrasive paper.
- Handy design.



DIAMOND CUT

Art. No.	Content
0893463001	1 L
0893463020	200 ml
0893463010	100 ml



HOOK & LOOP GRIT 2000 FINE SANDING DISC

Art. No. 0584 200 0

Micro-fine water sandpaper used for the removal of dust inclusions and fine surface defects.



SELF ADHESIVE GRIT 3000 FINE SANDING DISC

Art. No. 0584 023000

Micro-fine water sandpaper used for the removal of dust inclusions and fine surface defects.



HOOK & LOOP PU FOAM PAD

Art. No. 058601

- Optimum results.
- Foam intermediate layer allows users to gain a good feel for the surface.
- Time-saving & Velcro mount for rapid pad changes.



P10 FAST GRINDING POLISH PLUS

Art. No. 0893 150 010

- Highly abrasive high-gloss polish for quickly removal of surface defects in fresh repair and hardened top-coat paints.
- Thick consistency.
- Can be applied manually and by machine.
- For conventional and scratchproof paint types.
- Suitable for use on used and new paint surfaces.
- Silicone-free.



P 30 ANTI-HOLOGRAM POLISH PLUS

Art. No. 0893 150 030

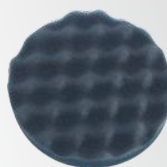
- Anti-hologram high-shine polish for lasting elimination of streaks and holograms on dark vehicle paints and for efficient removal of fine signs of sanding or slight paint irritations on used and new car paints.
- Manual/Mechanical Polishing.



P 55 COMBINATION POLISH PLUS

Art. No. 0893 150 055/058

- P55 Combination Polish was developed especially for use on old and new paints.
- P55 enables preparation and sealing of the paint in a single step.



SOFT POLISHING PAD

Art. No. 058528

- For final polishing.
- Extremely fine and soft polishing pad with Velcro fastener for the removal of micro-scratches and holograms.



BUFF PAD

Art. No. 0585195

- Special polishing sponge for machine polishing and cleaning of vehicle paints.
- Suitable for light and dark paint surfaces.



ORANGE FOAM PAD

Art. No. 0585026

- Soft polishing pad (orange) for a perfect finish, for sealing or for easily removing misting and holograms.
- Maximised effect with minimised wear.
- Greater flexibility over any body shape.



PNEUMATIC MINI POLISHER

Art. No. 07032330

- Ergonomic and rubberised handle.
- Lightweight and compact design.
- With speed control.



MICROACTIVE CLOTH PRO GLOSS

Art. No. 0899900139

- Cloth with dense fibre structure for deep gloss when cleaning, polishing and dusting.
- Extra-fine looping.
- Does not scratch paint.
- Easy-care properties.

REFILLO®

Refilling Made Easy System solutions for active chemical substances

- Safe
- Economical
- Environmentally Friendly



Self-filling can
Art. No. 0891800...



ORSY Station
Art. No. 0961 891 001

Compressed-Air Filling Station
Art. No. 0891800001



The REFILLO® System

The safe and economical system for **manual** refilling of spray cans with active substances and compressed-air.



ACTIVE SUBSTANCES FOR THIS SYSTEM

- | | |
|------------------------|---|
| • Brake Cleaner | • Interior Cleaner |
| • Rost Off | • Cut + Cool - Cutting and Drilling Oil |
| • Silicone Spray | • Leak Detector |
| • Active Glass Cleaner | • Wood-Slide |
| • BMF-Cleaner | |

How to operate REFILLO®



1. Open the bottle cap.



2. Fill with substance.



3. Place the bottle on compressed-air filling station.

PARTNER TO THE INDUSTRY

JULY 2019

Wuerth India Pvt. Ltd.

Central Support Centre:

Mumbai: No 703/704, WINDFALL, Sahar Plaza Complex,
Andheri - Kurla Road, J B Nagar, Andheri (East), Mumbai - 400059

Regional Support Centre:

Chennai: No. 104, Secretariat Colony 9th Street,
Kilpauk, Chennai - 600010



Regional Support Centre:

Delhi: No. 349, Patparganj Industrial Estate
Delhi - 110092

Regional Support Centre:

Kolkata: P - 46, Hide Road Extension
Near Brace Bridge Railway Station, Kolkata - 700088

www.wuerth.in

info.wuerth@wuerth.in

Toll Free: 1800 102 5061

Follow us on  



Wuerth India eSHOP

Register Now

@ www.eshop.wuerth.in



WUERTH APP

